

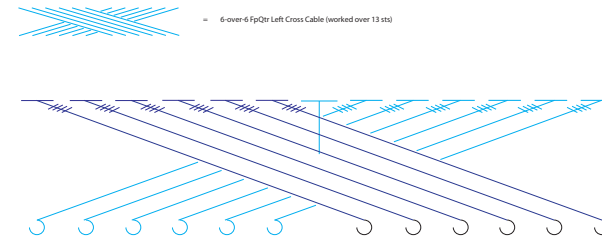
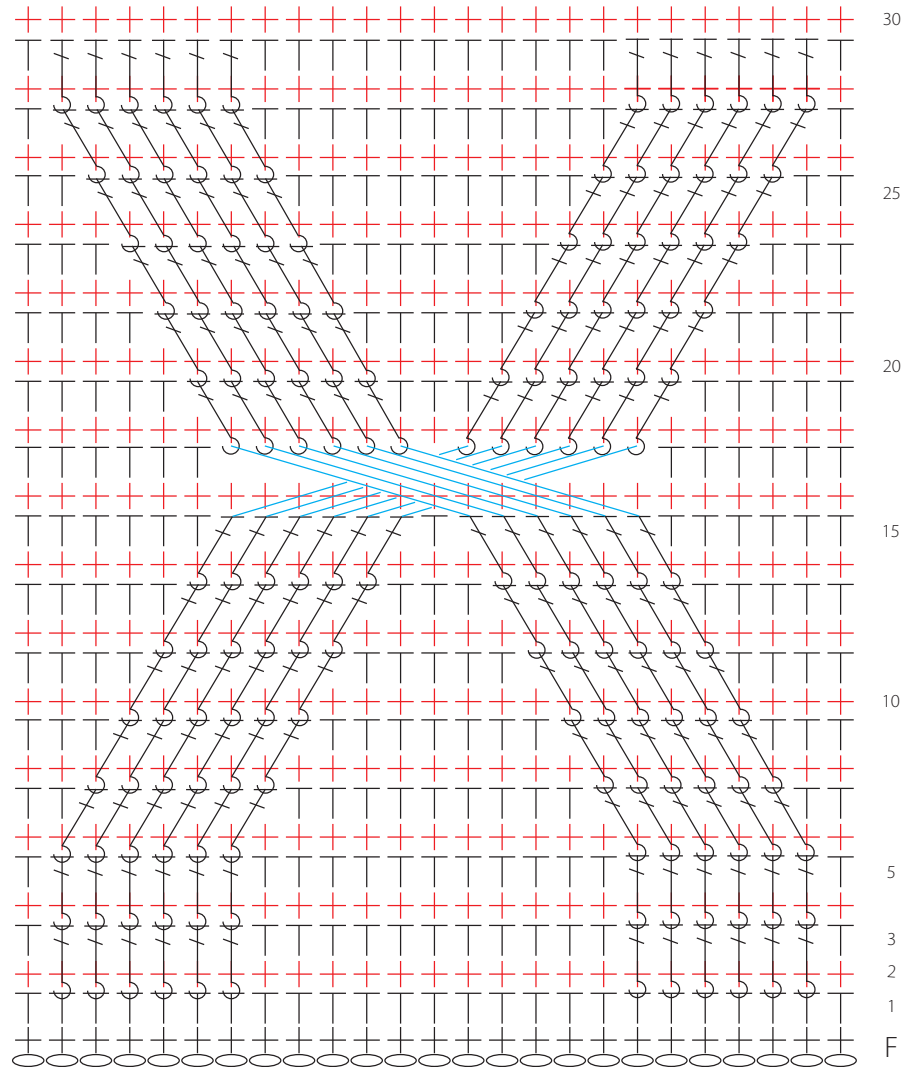
ERRATA

COWL NECK SWEATER DRESS

COWL

In Cowl Section, **Row 17** should read:

Row 17: Ch 1, hdc in each of first 18 sts, work 6-over-6 FPqtr Left Cross Cable, hdc in each of last 18 sts, turn.



Front Body Panel

Bottom Border

Foundation Row Should Read: With larger hook work 83 (93, 103, 109, 123, 131, 139, 147) Fsc, turn.

Back Body Panel

Bottom Border

Foundation Row Should Read: With larger hook work 83 (93, 103, 109, 123, 131, 139, 147) Fsc, turn.